

ANTICO SUPREME | COLOUR CERAMIC TILES

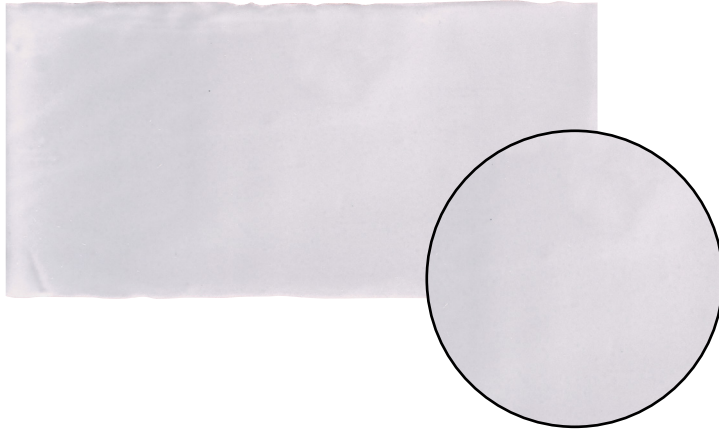
7 COLOURS | 1 FINISHES | 2 FORMATS



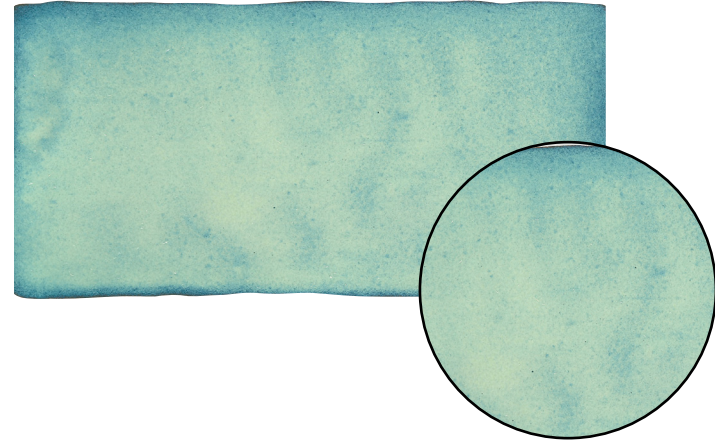
BLUEPRINT
CERAMICS



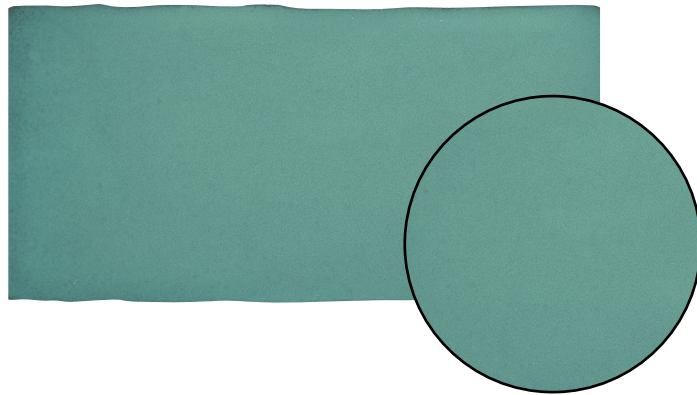
BPAS01



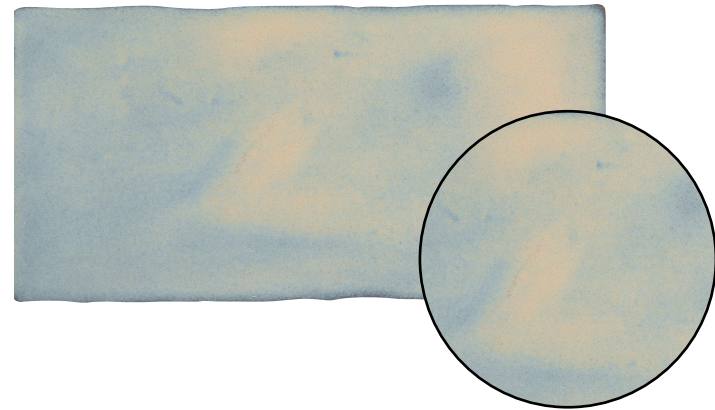
BPAS02



BPAS03

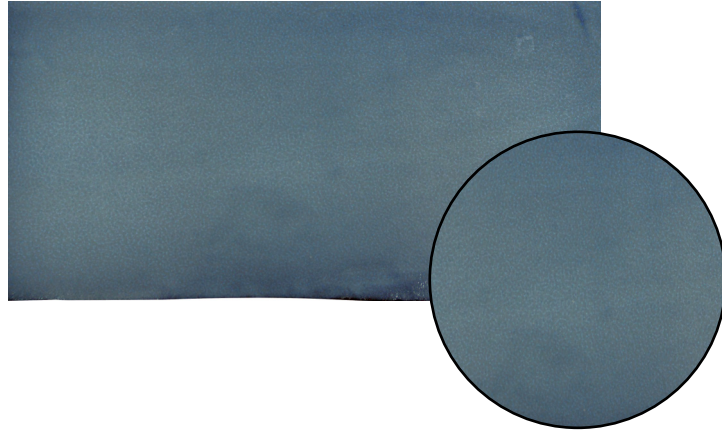


BPAS04

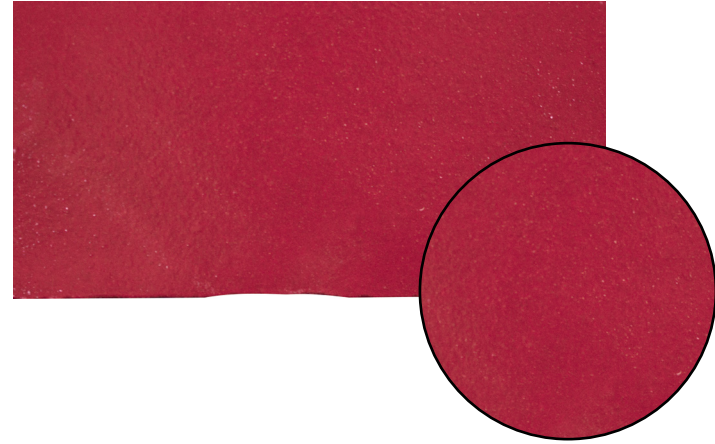


75x150mm
8mm
Satin

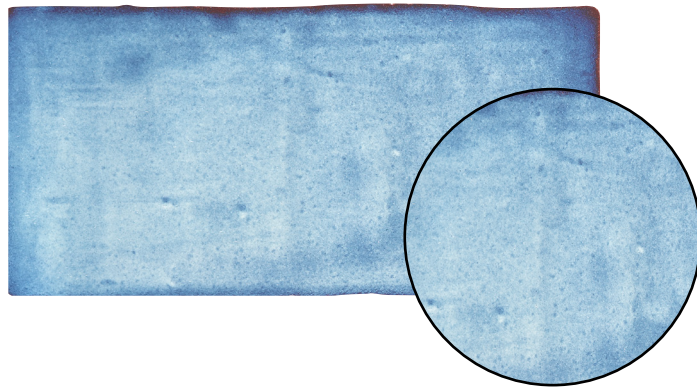
BPAS05



BPAS06



BPAS07



75x150mm

8mm

Satin

TECHNICAL DATA

FINISHES

Satin

THICKNESS

8mm

TEST DESCRIPTION	TEST REQUIREMENT	VALUE
Length & Width	BS EN ISO 10545-2	N/A
Thickness	BS EN ISO 10545-2	N/A
Straightness of Sides	BS EN ISO 10545-2	N/A
Rectangularity	BS EN ISO 10545-2	N/A
Flatness	BS EN ISO 10545-2	N/A
Water Absorbtion	BS EN ISO 10545-3	$\leq 10\%$
Flexion Resistance	BS EN ISO 10545-4	COMPLIES
Breaking Strength	BS EN ISO 10545/5	N/A
Abrasion Resistance	BS EN ISO 10545-6	N/A
Reaction to Fire	BS EN ISO 10545-12	N/A
Chemical Resistance	BS EN ISO 10545-13	RESISTANT
Resistance to Stains	BS EN ISO 10545-14	RESISTANT

**BLUEPRINT
CERAMICS**